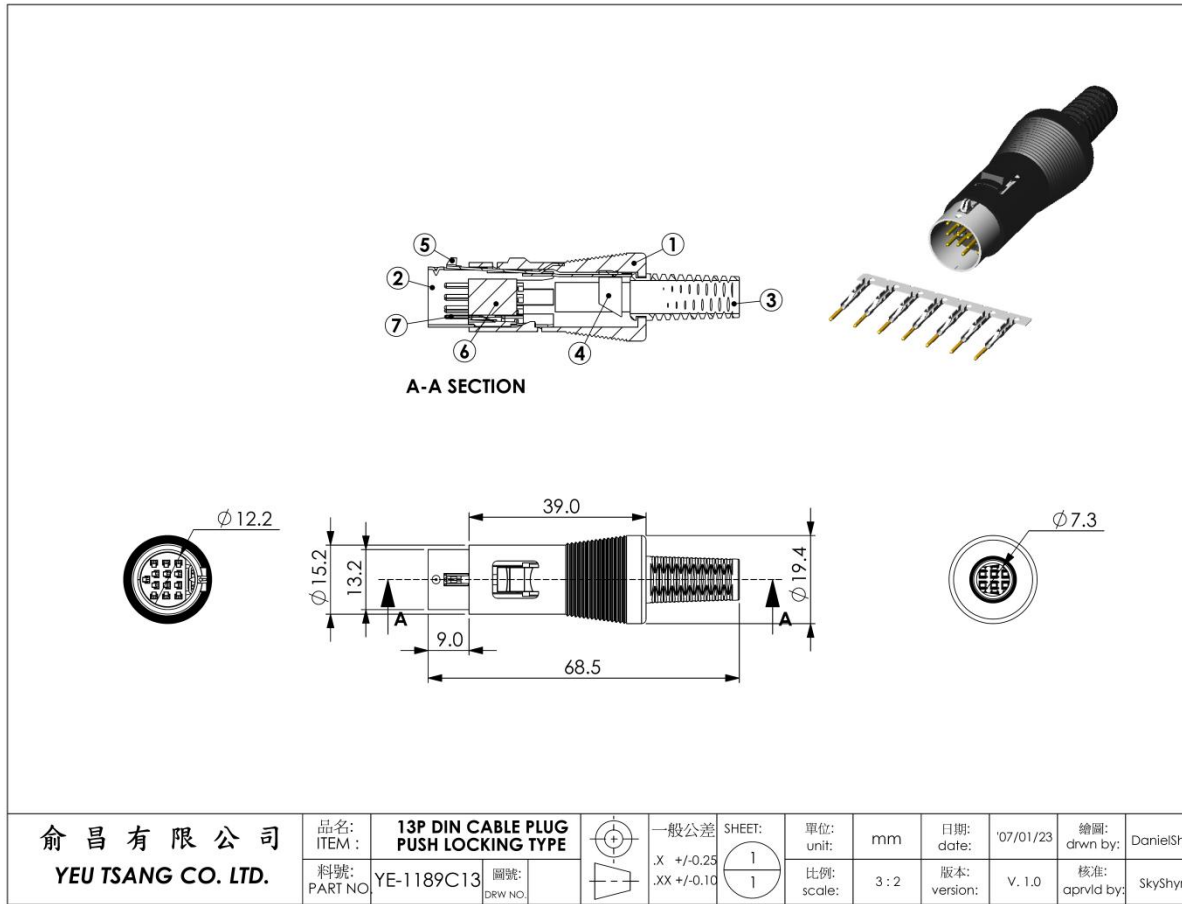


YE-1189C13 13P DIN CABLE PLUG ASSEMBLY TYPE



• MATERIALS :

1. SHELL COVER : PA66
2. SHIELD COVER : BRASS NICKEL PTD.
3. STRAIN RELIEF : PVC
4. CABLE TIE : STEEL NICKEL PTD.
5. SPRING HOOK : BRASS NICKEL PTD.
6. HOUSING: PBT+GF15%
7. TERMINALS: PHOSPHOR BRONZE GOLD/TIN PTD.

• SPECIFICATION :

•rating :

100V AC or 12V DC 2A

•insulation resistance :

MIN 50M Ω at 250V DC

•voltage withstand :

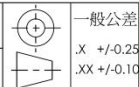
250V AC, 1 minute

俞昌有限公司
YEU TSANG CO. LTD.

品名:
ITEM: 13P DIN CABLE PLUG
PUSH LOCKING TYPE

料號:
PART NO: YE-1189C13

圖號:
DRW NO:



一般公差
.X ± 0.25
.XX ± 0.10

SHEET:
1
1

單位:
unit: mm

比例:
scale: 3:2

日期:
date: '07/01/23

版本:
version: V. 1.0

繪圖:
drwn by: DanielShyr

核准:
aprld by: SkyShyr